



About Re/Vue

Re/Vue is a video recording product that fulfills the specific capture, compression, and data archive requirements found in ATC, training and simulation, and command and control environments. Re/Vue consists of video and audio recording hardware, supporting driver, and control software. It delivers lossless recording and compression with remote and local data storage. Re/Vue integrates with an existing workstation and monitor and records from any DVI (digital) source at resolutions up to 2048×2048 and 2560×1600 . It also has a web-based control interface to manage and control single or multiple Re/Vue systems through a password-protected web-based browser.

Lossless Recording and Compression

Video recorders record data with varying levels of quality. Many use compression algorithms like JPEG, MPEG and H.264. While these lossy compression algorithms are fine for some surveillance applications, their compression artifacts cause video playback quality to suffer. Only Re/Vue's lossless video recording with synchronized audio can guarantee playback data quality will be identical to the original source data. Even at a resolution of 2048×2048 , Re/Vue can record a full 60 frames per second.

Minimized Data Storage

Lossless recording of ATC video creates a huge amount of data. Depending on configuration parameters and video data type, Re/Vue delivers lossless recording with extremely high compression ratios of 10,000:1 to 20,000:1 for typical ATC data. Whereas, traditional video recorders typically only offer a compression ratio of up to 300:1, Re/Vue's compression efficiency significantly minimizes data storage. This allows approximately 30 days of storage per terabyte.

Configurable Archival

Capturing and recording screen images and audio doesn't mean much if the data can't be properly archived and immediately accessed locally or remotely. Re/Vue not only offers local storage but also provides the ability to remotely archive recorded data. Remote archival can be configured to take advantage of existing storage servers on the network and an archival schedule can be easily configured using the web-based interface. This offers convenient retrieval of data from any remote machine on the network for review of any incident for investigative or training purposes.

Recording & Compression Hardware, Driver and Control Software

Playback Utility

Of prime importance in mission-critical applications is the ability to record screen events as they happen so data from any incident can be searched, retrieved, and distributed for investigative or training purposes. Re/Vue's playback utility supports playback on any Linux or Windows based system. If playback is at a lower resolution than the original recording, Re/Vue's playback utility offers enhanced features such as pan and zoom that can be used to help compensate for resolution differences.

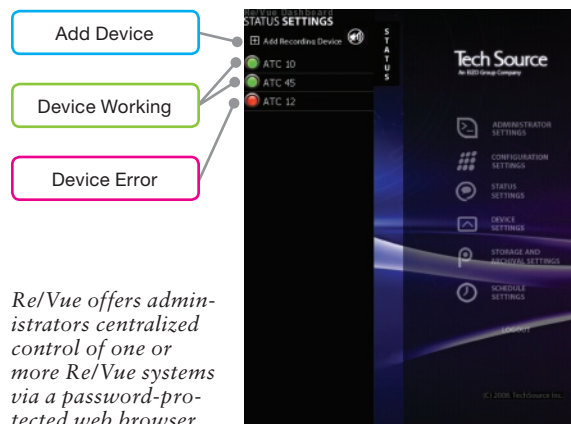


Platform and Graphics Card Independence

Video recording solutions are known to be temperamental. They typically require a very specific operating system, drivers, application software. Some even require recording and playback to occur on the same computer. The Re/Vue video recording system, however, is platform and graphics card independent, so even if recording is done on one computer, playback can be easily viewed on any Linux or Windows based computer.

Centralized Control

Re/Vue has a web-based 'Dashboard' interface that can be controlled from any machine on the network. It also offers administrators the ability to manage and control single or multiple Re/Vue systems through a password-protected web-based browser.



Long-Term Customer Care

Just as important as the initial hardware and software investment is the promise and delivery of personalized attention in long-term, high-quality, customer care. Tech Source is unrivaled in after-sales support, offering full customer care solutions in technical troubleshooting, general queries, software updates, and service.

About Tech Source

Tech Source, Inc. has provided computer graphics hardware solutions to the ATC and defense markets for over 22 years. Tech Source is a subsidiary of Eizo Nanao Corporation, a leading global manufacturer of high-end display monitors. The companies offer combined expertise, cutting-edge graphics solutions, and complementary product lines for ATC, defense, and other markets.

Specifications

Video Compression Ratio (Based on typical ATC data)	Compression ratio of 8,000:1 to 30,000:1*
Supported Resolutions	1280 × 1024, 1600 × 1200, 1920 × 1200, 2560 × 1600, 2048 × 2048
Maximum Video Resolution	4MP – 2048 × 2048 dual link DVI
Maximum Frames Per Second	85 Hz for most resolutions (60 Hz for 2048 x 2048)
Video Connectors	Dual link DVI-D input and output with full EDID/DDC support (also supports single link)
Audio Connectors	2.5 mm (3/32") stereo
Audio Format	MP3 standard – two channel up to 48 KHz sample frequency
Dimensions (W x H x D)	222 mm x 176 mm x 276 mm
Hardware Warranty	2 years

* Actual compression ratio is dependent upon configuration parameters and video data type

Tech Source

An EIZO Group Company

442 Northlake Blvd

Altamonte Springs, FL 32701 USA

Phone: 407-262-7100

www.techsource.com